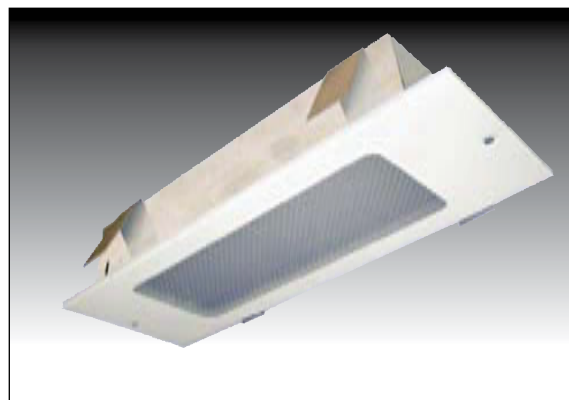
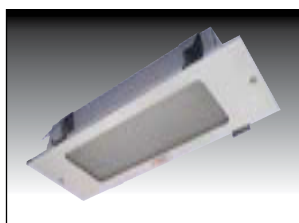


## CODE: **CAMBOURNE 8W RECESSED LUMINAIRE**

### DESCRIPTION

Fully recessed luminaire. Frame is epoxy powder coated and features prismatic Tpa rated diffuser. Removable hinged gear tray, c/w lamp. Brass and Chrome finish frame available.



## CODE: **CHILTERN 2X21W IP42**

### DESCRIPTION

Ergonomically designed and manufactured from polycarbonate. Microprocessor technology, high output tungsten 2x21W 3-hour duration. Features manual test button and carrying handle



## CODE: **FAIRISLE 28W2D POLYCARBONATE**

### DESCRIPTION

Manufactured in polycarbonate. Opal diffuser ensures soft glowing effect. There are no diffuser fixing springs to spoil appearance. Large terminal block, c/w lamp. Mains only version also available

